



NOTTINGHAM GIRLS' HIGH SCHOOL

GDST
GIRLS' DAY SCHOOL TRUST

SIXTH FORM CURRICULUM GUIDE

MUSIC

AQA

ENTRY REQUIREMENTS

Capable of operating at a level of practice and understanding equivalent to GCSE music. Proven ability in performing on one or more instruments or voice to at least grade 5.

It is not necessary to have studied this subject at GCSE in order to take it at A Level.



Music is both varied and enjoyable and offers many opportunities for performers and composers to develop their listening skills and to further their understanding of music in general. You do not need to have taken GCSE Music; as long as you are a strong performer and like a challenge you'll enjoy this course.

You will spend your time on appraising, composing and performing and you can expect lessons to move well beyond the syllabus in their content. The lessons are similar in their approach to university tutorials and all students are encouraged to further their study of Music outside the classroom.

During this course, you will study in depth set works from the Baroque, Classical and Romantic periods, covering the concerto, opera and music for piano. In addition, this specification allows you to specialise in an area of particular interest to you, choices ranging from Musical Theatre to Jazz. You will also have the opportunity to develop and refine your aural and music dictation skills. These aural skills can be extremely beneficial in many ways, particularly for those students interested in music transcription and arranging.

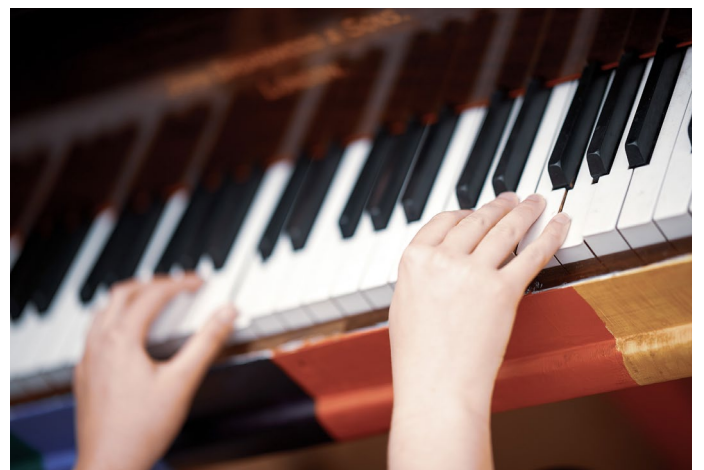
There is a written examination at the end of the course. Wider listening is a very important part of this A Level and there is no doubt that by the end of your two years, you will have experienced a wide and rich variety of many different styles and genres of music.

You will also complete two compositions. One of these will either be to a brief set by AQA or the completion of a chorale (writing in 4-part harmony) and the other is a free composition. Two years will give you plenty of time to perfect your skills in this area. With support from experienced teachers, you can approach your work with confidence and complete it with enjoyment and a real sense of achievement.

Performance is an important element of A Level Music. You will submit a recording of pieces lasting for a total of ten minutes. These can be performed on any instrument or voice and can be either a solo or an ensemble, or a mixture of both. You can record your pieces when you are ready, either at school or with your instrumental teacher.

The Music Department encourages all its students to participate in musical events both in and out of school and there are opportunities for everyone to be involved in a variety of activities, ranging from solo work to orchestral playing, choirs, musicals and bands. For those students who prefer not to be in the limelight, we encourage involvement in other ways, from running groups and rehearsals for the younger girls to becoming involved in work backstage for our musical productions.

Music A Level will increase your appreciation and understanding of many different styles of music and furnish you with the knowledge and skills that will enhance your music making for life.



*Click here to watch the course introductory video
from Head of Music, Mrs Chris Nicklin*

In order to join us in the Sixth Form, we require an average of grade 6 across eight GCSE subjects, including English and Mathematics. See individual subjects for any specific requirements for study at A Level.

For detailed course information on all of the A Level subjects please visit the AQA, Edexcel or OCR websites.

If you have any questions about any aspect of the admissions process, please call 0115 935 4444 or email admissions@not.gdst.net



Nottingham Girls' High School
9 Arboretum Street, Nottingham NG1 4JB
0115 941 7663 enquiries@not.gdst.net
nottinghamgirlshigh.gdst.net



FriendsofNGHS
@NottmGirlsHigh